

**Art
in
Odd
Places**

**September 4 - October 1, 2006
Lower East Side, New York City**

NY 7 1 NY 7

FOR IMMEDIATE RELEASE

Contact: Ed Woodham

Phone: 212-780-0800 x241 **Cell:** 347-350-4242

Email: info@artinoddplaces.org

Website: www.artinoddplaces.org

ART IN ODD PLACES 2006

25 Local Artists Examine the Role of Public Art in Unexpected Lower East Side Locations, from the F Train to an Essex Street Porn Shop to a Demolition Site on the Bowery

What is public space? The internet? The sky? The sidewalk? A third-story apartment window? In the second annual Art In Odd Places, taking place from September 4 – October 1, twenty-five artists examine the role of art in public space at thirty locations throughout the Lower East Side. Artwork from a variety of media—including painting, sound, video, performance and landscape art—is presented in non-traditional places including the subway, a demolition site, a porn shop and community gardens. A map locating each of the thirty art sites will be distributed to local retailers, museums, bars and cafes; anyone is welcome to pick up a map and explore!

- Heading home from work, one might happen onto Gretchen Vitamvas' *Subwear*: performers on the F train sporting a graphic camouflage design inspired by subway car interiors.
- In *Deconstructing Bowery*, Sally Young presents photographs, postcards, maps and a written history of a Bowery demolition site.
- In *Shadow Boxing*, George Spencer projects two boxers' shadows onto the construction site where the Charas/El Bohio Art Center (in which he had started an after-school art program and kept a studio) once stood.
- On Astor Place, a passerby might stumble upon Earthcar/Panopticon by Hondo Weiss-Richmond: a wheeled platform divided into a small garden and a watchtower.

Maps are available at the Tompkins Square Library at 331 East 10th Street near Avenue B, The 14th Street Y at 344 East 14th Street near First Avenue, Sunflower Video and Porn at 119 Essex Street, and at all *Art In Odd Places* locations. For a press kit, map, list of all thirty locations, map pick-up spots and a complete schedule, please visit www.artinoddplaces.org.

Art In Odd Places is an independent artists' project exploring public space under the direction of artist/curator Ed Woodham.

Art in Odd Places 2006

Flint Butera

Tied to the City

Mixed media work exploring the monstrous marriage of Eros and Polis.

Sunflower Video and Porn Shop- 119 Essex at Rivington

September 4 – October 1 (24 hours daily)

Flint Butera has been a part of the New York City art scene for the past sixteen years. He just received an Honorarium from Suny Brockport. A modern-day disciple of and expert on Henry Thoreau, Flint's philosophy exposes, with wit and painful honesty, the dark underbelly of consumerism and the marginalization of those who work as artists outside the mainstream.

<http://www.artphobia.com/>



Gwen Charles

Green Connected

Charas/El Bohio Art Center once stood at 605 E. 9 Street.

A performance exploring the nature of the connection between two people in a relationship. *Green Connected* is a green-and-orange 180-foot tube of fabric to be worn by two people, one person on each end, throughout the Lower East Side.

1-4pm Saturdays September 9 and 23

Yellow Dresses

A performance based on "I Am a Woman" by Ann Valliant: "I am a woman, a part of and the whole of the first circle, the circle that transcends space and time, the circle of women joined..."

**Hamilton Fish Park
(Houston Street & Stanton Street between Avenue C & Avenue D)**

12pm September 16

Gwen Charles (continued)

Mattress Parade and Bedding Circus

A performance—to an oompa beat--of fantastical sheet tucking, forward bedrolls and pillowcase flipping.

Starting at Avenue A & 13th Street, ending at Avenue A & Delancey Street

3-4pm September 30

Gwen Charles is a visual artist and educator. Her artwork forces private thoughts to come alive in public spaces through staged improvisational outdoor performances and cultural collaborations. The works are exaggerated commentary stemming from moments from every day interactions between people.



Christin Couture

Voyeur

FIRST ST. GARDEN (between 1st Ave. & 2nd Ave.)

Paintings of a left eye and a right eye that, through their positioning on opposing brick niches, create a field of voyeurism between them. These paintings are based on an historical reproduction and are done in a 19th-century-made-contemporary style. Visible to pedestrians even when the garden is closed.

**1-5pm Saturdays and Sundays; 5-7pm Wednesdays
September 4 – October 1**

Christin Couture has lived in the East Village since 1980 and now divides her time between NYC, her studio in Shelburne Falls, Massachusetts and Mexico City. She has had solo shows at Monique Knowlton Gallery, NYC; Galeria Arvil, Mexico City and Dabora Gallery, Brooklyn, and group shows at PS 122; Staempfli Gallery; Westbeth Gallery, The DeCordova Museum; Foro de Arte Contemporaneo; and Boston University Art Gallery. In addition, she has had fellowships at Yaddo, MacDowell Colony, and Fondation Karolyi in France.

<http://www.the-spa.com/c2/>

Kara Dunne

Bathroom Vignettes: Scenes in a Bathroom

A performance addressing the issue of public vs. private space as it applies to the public restroom: it remains a common area open to the public for use, yet as a bathroom it is one of the most private spaces in our society. This series of vignettes seeks to transform our understanding of this particular breed of public space.

Lower Level Bathroom, Tompkins Square Branch Library, 331 E. 10th Street

10am – 5pm September 9; 12-4pm September 11, 12; 12-8pm September 13

Kara Dunne is a performance/installation artist from the Boston area. Humor, intrigue and absurdity are all aspects of her performance work; she creates situations and events in public that often involve costume, audience participation or spectacle that one simply cannot ignore. She strives to break up the mundane in everyday life and create out-of-the-ordinary events.

Natalie Giugni

Guns & Poses

An installation of flowers constructed from everyday images of airbrushed femininity and violence. These works seek to point out our general failure to acknowledge such images' ties to reality.

Front gate of E Third Street- Garden between Avenue B & Avenue C

September 4 – October 1

Natalie Giugni is a graduate of Manhattan's School of Visual Arts. Her works are infused with color and with memories of her various experiences abroad—particularly those of South America, Japan and Europe.

Jeremy Helton, Patrick Giglio and Sono Osato

Destinations

From a second floor window on Ludlow Street videos are projected across the street onto a fence bordering a vacant lot. While the videos are inspired by current events, politics and sexuality, they do not explicitly represent these subjects; instead, they offer an aesthetic respite from the neighborhood's restless transition into a "hip" epicenter of art, fashion, music and commerce.

Afternoon of the Faun (Patrick Giglio)

Filmed in a section of Fire Island known as "The Meat Rack," *Afternoon of the Faun* takes as its source material the poem "L'après-midi d'un faune" by Stephane Mallarme.

Dreaming and Of Two Minds (Jeremy Helton).

Dreaming seeks to create a feeling of suspension within a moment that vacillates between the quotidian and the abstract. *Of Two Minds* is a post-September 11th exploration of choice and divergence in the wake of tragic events.

Revenant (Sono Osato)

Revenant is a work typical of Osato in that it involves topography, depth, and layers through time, but in this specific case, the layering is a double exposure achieved by running the film through the camera twice.

174 Ludlow Street at Stanton Street

**9pm – Midnight Thursdays through Saturdays September 7-28;
September 3 and October 4.**

Alicia Harding

Lowlife

322 11th Street- Casey Design Rubber Stamps

The legend of alligators in NYC's sewers comes to life through cardboard.

Casey Design Rubber Stamps, 322 E 11th Street at 2nd Avenue and throughout the Lower East Side.

September 4 – October 1

Alicia Harding was raised in Missouri and educated at NYU's Tisch School of the Arts. She received theatrical training at Playwrights Horizons Theater School, where she focused on creating original work and designing sets and sound.

William Hosie

Site Intervention/ Birch Tree

First St. Garden- First St. Between 1st and 2nd Ave

A sculpture juxtaposing two kinds of vertical growth imperatives: one a living birch heliotrope, the other an artificial formal geometry based in permutation and orientation. Seen through the chain-link public barrier (the omnipresent grid of urban reality)—in a regulatory climate of “nature through the turnstile”—this visitation presents the coded seed of things to come—nature accommodating its own subversion for public benefit.

1-5pm Saturdays and Sundays; 5-7pm Wednesdays September 4 – October 1

William Hosie's constructions form a body of work he began developing in 1985, informed by construction sites, abandoned buildings and piers in New York City and by natural processes occurring in the river beds and deep forests of Massachusetts.

Sarah Julig

Crystalline Cliff Dwellings on a Chain Link Fence

Orchard Ally Community Garden, E 4th Street between Avenue C & Avenue D

A series of cut-and-folded, modular origami dwellings and inhabitants placed organically across the geometric grid of a fence.

September 4 – October 1

Sarah grew up surrounded by tundra and mosquitos. She studied art at the University of Alaska and the University of Lapland in Finland. She moved to New York in 2005 and has kept busy since, making installations for the Elsewhere Artists Collaborative in Greensboro NC, Potion Cafe, Xanadu* artspace, and ABC No Rio, as well as participating in a group show at Gallery 128.

Kristen Rhea van Liew

Capsules

An installation exploring garbage and its vessels: the receptacles of daily wastes born out of daily rituals, the time capsules of our lives.

Taras Schevchenko Place between E 6th Street & E.7th Street

September 4 – October 1

Originally from Atlanta, Kristen Rhea van Liew will soon be graduating from NYU with a BFA in studio art and dance. This combination of studies has led her to the exploration of viewers as performers.

Ligature Laboratories (Bao-Khang Luu & Ksenya Samarskaya)

Infix

Dozens of site-specific comma shapes are placed throughout the Lower East Side to uncover layers of urban history.

Throughout the Lower East Side

September 4 – October 1

As a network of artists, designers and theorists, Ligature Laboratories plays on the borders and surfaces of culture. We navigate through our various routines with a voracious appetite to question, accumulate and explore.

<http://www.baokhangluu.com/> <http://www.samarskaya.com/>

Setha Low

Burdened is a sculpture that locates the common places of women's contact and engagement—those that transcend a multiplicity of cultures. It invokes women working, carrying baskets, gathering food and shouldering work and family, and evokes the food we eat and the texture of the material world in which we live.

Danal, 90 E. 10th Street at 3rd Avenue

12-3pm and 6-10pm Mondays-Fridays, 10-3pm Saturdays and Sundays

Setha Low is a native Los Angeleno transplanted to East Hampton, New York. Attracted by the creative environment of the East End, her work has flourished under the tutelage of ceramic artists Diane Mayo, Diane Giardi, Carolyn Bistran and Sandy Beckerman.

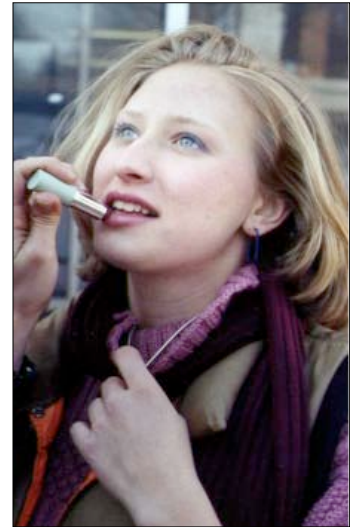
She joined the Crazy Monkey Gallery in 2005. Her sculpture and ceramics draw upon her experience as an anthropologist living in diverse cultural settings, her understanding of embodied space, and sensitivity to multicultural aesthetics.

Rebecca Major

Mismatched

A kinetic installation piece incorporating found objects and live- and recorded sound to explore vulnerability and the ephemeral in city spaces. Hundreds of fluttering used-paper matchbooks hang on guitar strings, creating differing frequencies that are captured by contact microphones.

184 E. 7th Street at Avenue B



Rebecca Major is a graduate of Pratt Institute with a degree in Studio Arts. She is a multidisciplinary artist working in photography, video, and installation art. Her work has been shown in New York City and in Budapest, Hungary.

<http://www.re-title.com/artists/Rebecca-Major.asp>

Anthony R. Manzo

Big City

Large prints of familiar city icons wheat-pasted onto the side of a building.

Ludlow Street between Rivington Street & Stanton Street

September 4 – October 1

Anthony R. Manzo is a graphic designer who likes to print small images large

JD McGuire

Outdoor Animals

An installation of two evolutionary lines of plastic toy animals.

E 12 Street between 1st Avenue and 2nd Avenue

September 4 – October 1

Born 1978 in the Ozark Mountains, J.D. McGuire received a BFA from the Kansas City Art Institute in 2002. He is known locally for both his numerous art exhibitions and his covert art activities. He currently lives and works in Kansas City.

Erika Villalba, Amie Sanborn, Jacqueline Raposo

Modern Eye Theater Company

The Happening Crawl

The Happening Crawl is a roaming improvisational performance taking its immediate surroundings as inspiration. The audience can follow from street corner to bus stop to park space as ModernEyes creates a simple, unique, and just plain funny theater experience, rain or shine!

Astor Place Square at E. 8th Street, across from Starbucks; bus stop at Lafayette Street & Great Jones Street; First Park, E. 1st Street & 1st Avenue.

Amie Sanborn: An actor for years, Amie met her fellow founders while performing off-Broadway in the Millennium Talent Groups' production of FOOLS IN LOVE, playing at the Manhattan Ensemble Theater.

Erika Villalba: Erika is a graduate of NYU's Tisch School of the Arts and a proud member of ModernEyes Theater Company. Previous NYC theater credits include: Fools in Love (at Manhattan Ensemble Theater and BAM), El Amor de Don Perlimplin (at Repetorio Espanol), and Machinal (at Access Theater).



Jacqueline Raposo: Jacqueline graduated from the University of Connecticut with a BFA in Acting, and the LITES School, Dublin, and now bases herself in New York City. She just finished a 13-month gig performing as Hermia /Peaseblossom in Fools in Love with Millennium Talent Group, with whom she had been an ensemble member since October of 2004.

Hondo Weiss-Richmond

Earthcart/Panopticon

Earthcart/Panopticon is a human-powered, wheeled platform divided into two sections. The front half consists of a small garden and lawn tended by a gardener; the rear half contains a watchtower in which an observer maintains vigilant surveillance over all that lies before him.

When *Earthcart/Panopticon* is in motion, the two are busy at their tasks; when it comes to a stop, it's the audience's turn to work in the garden or to ascend the tower and survey the city.

Intersection of Lafayette Street, Astor Place & E. 8th Street

3 - 5:30pm September 8, 2-5pm September 9, and 11-2pm September 10



Hondo Weiss-Richmond, a director based in New York City, is currently working on a number of new plays, revivals, and site-specific works. In addition to directing, he works as an actor and freelance theatrical carpenter/electrician.

Sumakshi Singh

Interlude (oasis)

A series of painted reflections cast in resins that fill unconsidered 'gaps' between daily commuters' origins and destinations, begging a reconsideration of the familiar visual landscape. These paintings undermine the ideas of quick delivery proposed by manicured urban space by using the flaws and fractures of urban use and abuse as a frame.

The north side of Houston Street between 1st & 2nd Avenues

September 4 – October 1



Sumakshi Singh left India to join the MFA program at the *School of the Art Institute of Chicago* in 2001, where she now teaches. She was a resident on fellowship at Skowhegan in 2003, won the prestigious Richard Driehaus award and grant for Emerging Artist in Chicago for 2005 and was a finalist for the *Rijksakademie* in Netherlands this year. Her solo shows include "Flux" at the *Museum of Contemporary Art*, Chicago (2004), "elsewHERE" at *Halsey gallery*, SC (2005) and

"Lumps, Bumps and things that are Art" at *Van Harrison gallery, Chelsea, NYC*. Her work has been reviewed by the *Village Voice, Chicago Tribune, Charleston City Paper* and *New Haven Register* among other papers and catalogues. www.sumakshi.com

Jan Lynn Sokota

CHUMP CHANGE

A special mint coin. Get yours now for only \$1.00.

Loveshine, 543 1/2 E. 6th Street

**1-8pm Sundays, Tuesdays, Wednesdays & Thursdays; 1-10pm Saturdays and
Sundays, September 4 – October 1**

Jan Lynn Sokota was born in Manhasset, New York. She graduated from New York University's Gallatin School in 1999 with an MA, and earned her BFA from SUNY Purchase. She has worked as a Digital Editor for the **CBS Evening News** since 1988.

George Spencer

Shadow Boxing

A revised revival of one of Spencer's old projects involving cutouts of boxers. This time, Spencer will project shadows of two boxers onto the site where the Charas/El Bohio Art Center—where he'd had a studio and started an after school arts program—once stood.

605 E. 9th Street between Avenue B & Avenue C

8pm September 9, 16, 23, 30

George Spencer began his art career in 1979, when he was fourteen years old, by writing graffiti on the #6 train. In 1992 He co-founded the arts collective REPOhistory and created the Lower Manhattan Sign Project. REPOhistory created similar projects in Atlanta and Houston. He has been making public art collectively and on his own ever since.

Surveillance Camera Players (Bill Brown & Susan Hull)

Surveillance Camera Outdoor Walking Tour

This tour explores topics such as the militarization of domestic law enforcement.

Begins at NE corner, Avenue D & Houston Street

2 pm September 9

Formed in NYC in 1996 by Bill Brown, Susan Hull and several others, the SCP is the United States' foremost anti-video-surveillance group. They just published their first book, *We Know You Are Watching* (Factory School Books).

Elizabeth and GeorgeAnna Tisdale

Kiss My Liquid Assets

An albino frog with a castellated crown perches on a carpet of billion dollar bills, presiding over a pond filled with the drowned artifacts of the neighborhood's racial-, cultural-, and class diversity.

Open Road Park (between 1st Avenue & Avenue A on E 11th Street

September 4 – October 4

Elizabeth Tisdale, a downtown-Manhattan exhibiting artist /resident for the past 33 years, received a BFA from the School of Visual Arts. Her daughter, George Anna Tisdale, a third grader and lifetime resident of E. 12th St., is currently exhibiting at Snake Monkey Gallery on Avenue A.

Mosaic: A Resonant Butoh Offering

Vangeline Theater

A butoh inspired performance work.

Mosaic Circle, East River Park

Vangeline is the Artistic Director of the Vangeline Theater and a student of Butoh master Diego Pinon (Mexico) and Tetsuro Fukuhara (Japan). The Vangeline Theater's mission is to utilize dance and various forms of artistic exploration to "bring dreams to the people and people back to their dreams."

Jessi Gayle (solo) is a performance artist residing in Ridgewood, Queens. Her deepest desire is to bring the joy she experiences through dance to others. Her work is primarily based on the teachings of Butoh master Diego Pinon (founder of "Butoh Mexicano Ritual Danza") and philosopher and spiritual teacher Krishnamurti, and on improvisational style dance.

Gretchen Vitamvas

Subwear

A performance in which volunteers ride the subway wearing "subwear suits": zip-up work coveralls, 60's style shifts, business suits, or other uniform-style clothing printed with a graphic camouflage design inspired by both subway-car interiors and standard military camouflage. The performance seeks to provoke reflection on themes of physical and psychological safety, class and ethnicity, and identification with particular groups.

F & V subway trains between Delancey & 14th Street stations

7-9pm Thursdays; 3-5pm Sundays, September 4 – October 1

Gretchen Vitamvas has been living and making work in Brooklyn for the past 8 years. She received an MFA from Queens College/CUNY, a BFA from Carnegie Mellon University, and studied at the Skowhegan School of Painting and Sculpture. Recent shows include group shows *Blending In*, *Measuring Up*, *Holding Back* at Buzzer Thirty in Astoria (2005), *Eat Me* at 65 Hope St. Gallery in Williamsburg (2004) and solo show *Blending In* at Manhattan Theatre Source, NYC (2002).

J.Kathleen White

Peephole dioramas attached to a fence.

**Empty lot on 207 E 13th Street at 3rd Avenue; Community Garden,
Avenue C & E 10th Street**

J. Kathleen White writes, draws, and lives on the Lower East Side. Until mid-October 2006, you can also see her work in the basement of the Theatre for the New City, NYC: a mural of an eagle on charnel ground.

<http://people.wcsu.edu/mccarneyh/fva/W/WhiteJk.html>

Sally Young

Deconstructing Bowery

A series of postcards and a wood book containing photographs-, maps-, and the written history of Bowery/Cooper Square between E 5th and E 6th, where three 19th-century houses in various stages of disrepair once stood. The hotly contested demolition of the houses to make way for a large hotel revealed evidence of an historical wood structure—a structure now forever lost to gentrification.

235 E. 5th Street between 2nd Avenue & Bowery Street (Cooper Square)

Every weekend in September starting September 3

Sally Young is a mixed-media artist who works simultaneously with photography, painting, collage, and the written word. She is also an NYC historian with a passion for neighborhood preservation.